



The Electro Glass Gate GS Slim combines elegance and sophistication within its minimalist 101mm diameter drive mechanism. Its contemporary design using a blend of quality stainless steel, glass and an accent of LED lighting, affords the Glass Gate GS Slim an aesthetic appeal within any modern environment.

The Electro Glass Gate GS Slim is the perfect solution for access control applications where a wider lane is required of between 550mm and 900mm as a clear opening.

The Electro Glass Gate GS Slim is equipped with a servo-actuator drive that can be controlled in either a manual or an automatic mode.

- In the manual mode, gate is opened/closed according to the command from a control panel often positioned at a reception desk or a remote position.
- In the automatic mode, the gate is opened/closed determined from the signal from an access control system.

The operational principle of this turnstile is based upon the device locking the leaf in its closed position.

When access permission is granted, the actuator rotates the glass panel to 90 degrees and it returns to its initial closed position when access is completed.

Controlled by

- Access control system
- Manual control

When power goes OFF both directions are free.

Electrical Specifications

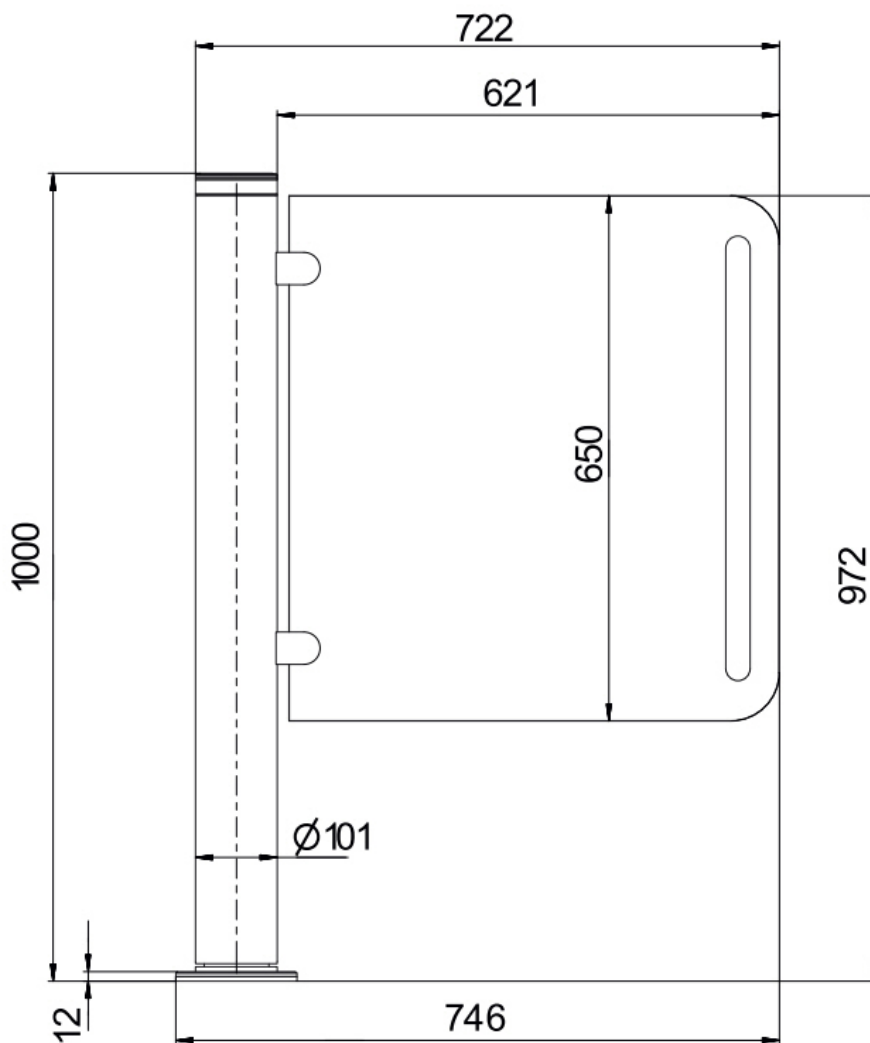
- Voltage:
 - from the AC (100–240) V, 50/60 Hz
 - from a DC source 12 V
- Maximum power consumption:
55 W per pass

Technical Specifications

Diameter	101 mm
Length (as standard)	722 mm
Height	1000 mm
Weight (no more than)	50 kg
Crossing capacity in free access mode	60 persons/min
Crossing capacity in single access mode	20 persons/min
Passage width	up to 900 mm

Additional Accessories

- Reader posts
- Reader for access control system
- Remote radio controller
- Backup battery 12 V, 17 A•h



Access control system



Push button



Motorized



Bi-directional



Version for disabled available

